

# The 890 Jump Experience

# Across the Galaxy



Coming 2945



# UNLIMITED HORIZONS AWAIT

Introducing the 890 Jump.

The best sunset is the one you haven't seen yet.  
The best noodles are worth traveling light years for.  
The secret to happiness is whispered inside every jump point.

Once you know this about life amongst the stars, you'll never settle for less than the best means to enjoy it. Fortunately, thanks to the 890 Jump, you'll never have to ...

With an elegant, sleek exterior that belies its spacious interior, the 890 Jump is a true engineering marvel; crafted to impress from every angle by combining a unique, innovative design with the finest materials and the most advanced technology. The result is a vessel that is in a class all of its own, a masterpiece worthy of the name ORIGIN.

This pre-order brochure will give you a glimpse of not only the most luxurious liner ever built, but of the universe it will allow you to explore.

Reserve your 890 Jump today and secure your exclusive chance to experience the galaxy in a remarkable new way.

Jennifer Friskers  
President, CEO  
ORIGIN Jumpworks GmbH





# PRIME TERRA

---

Rising like a river around you, the sounds of the city rush by as you weave your way past the towering buildings that line Founders Avenue. This is Prime, Terra's crown jewel. It is here that the best the Empire has to offer mixes and mingles to create an experience unique unto itself.

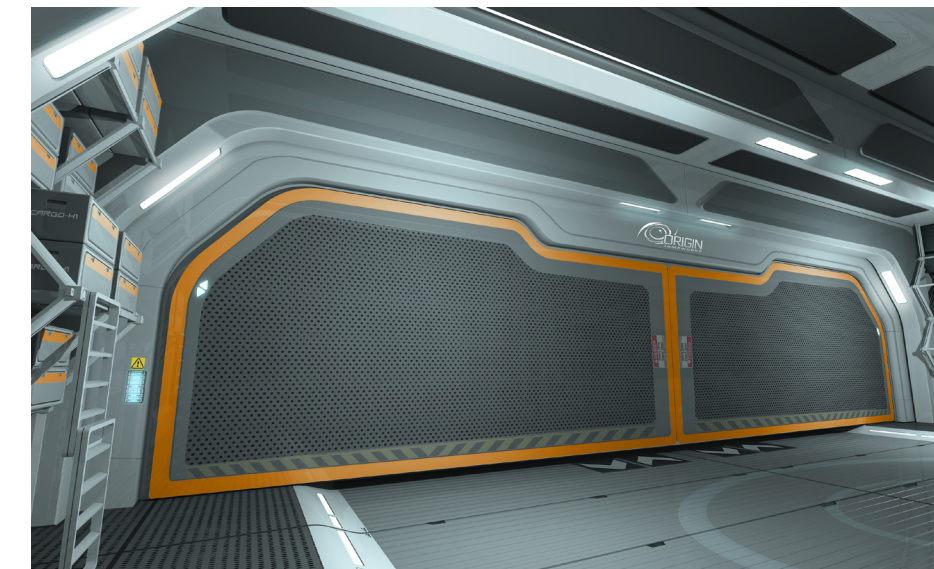
## HIGHLIGHTS

Once the sun dips below the horizon and night falls, you head to the waterfront along the **Promenade** to witness the cityscape truly come to life with **Lumo**, a dazzling light show set to a custom score composed by **Pieter Le'Veer** where millions of windows illuminate to portray the city's rise from the foundations of the two original colony ships.

“If you want to see where Humanity's been, you visit Sol. If you want to see where it's going, you visit Terra.”

– Senator Lenara Royce, Terra (Retired)

*T*urings  
S t o p



## COME ABOARD

More room to entertain. More space for socializing. More areas for comfortable living. The 890 Jump is proof that sometimes more is definitely the right amount. This is the ideal vessel for both parties and privacy. Take your pick of gathering spaces — enjoy magnificent views from the Captain's Bridge or stretch out in the salon. Or take time out — retreat to your spacious stateroom or find a cozy nook to view the stars in quiet solitude. Maybe you want to stretch your legs — with an accessible landing bay capable of housing a small ship or shuttle, you don't have to keep the party aboard the 890 Jump.



---

## CAPTAIN'S BRIDGE

One of the best parts of being the captain is that you're always privy to the best views. Bask in the ever-changing cosmic vista with the wrap-around bridge rotunda, offering unparalleled visibility for a vantage point that's simply unmatched.

Built for maximum comfort, the bridge offers three exquisitely crafted operator seats from Atlas, featuring ORIGIN's award-winning suspensor technology that cradles you for the smoothest flight of your life. Whether you're at the helm or just enjoying the ride, the 890 Jump proves that the journey is just as important as the destination.



“The Human language’s greatest shortcoming is being unable to capture the beauty of the Olympus Pool.”

– Horace Fushon, Artist



---

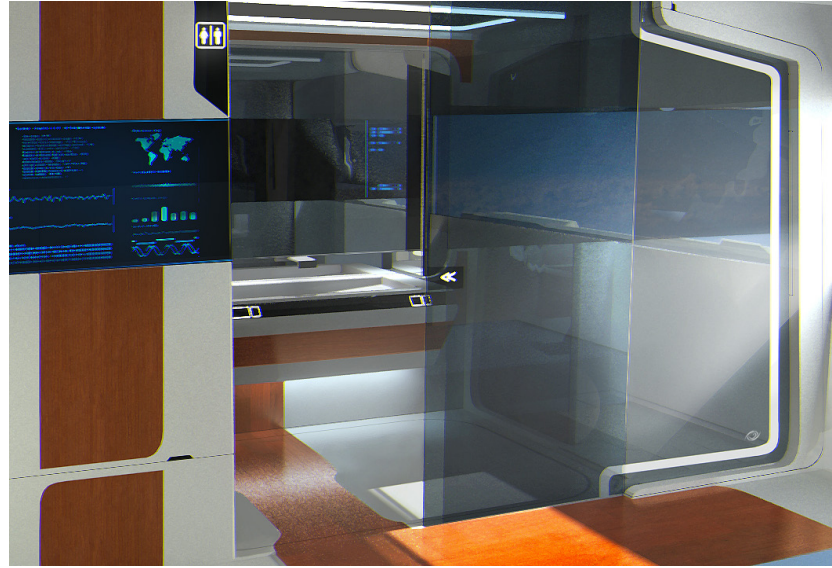
## CASSEL GOSS

As you stroll along pristine powdered sands watching the water kiss the shores of Casselean, it instantly becomes clear why this planet has inspired countless poems, songs and romances.

### HIGHLIGHTS

There are few places in the Empire that can match the raw cosmic radiance of the **Olympus Pool** nebula. Filling the entire sky above you with rich, swirling colors, time on Cassel will pass all too quickly as you debate whether the planet is even more beautiful at night than it was during the day.





## BLISSFULLY FRESH

This fully featured spa is more than just a place for you to rest and refresh. It is a constantly rejuvenating experience.

Our Aphod AquaWorks designed facilities provide comfort and tranquility in an otherwise chaotic and disorderly universe. Enhance your sense of well-being as you relax in the perfectly calibrated hydrosystem; melt the stress away with efficiently distributed water pressure featuring precise controls. Whenever you need to decompress, unwind, and find peace in your life, you will find it in your own private sanctuary aboard the 890 Jump.



“Think of the perfect planet. What you just imagined is called Saisei.”

– *Isabella Fumi*

## FUJIN CITY CENTAURI

Your head feels light as you breathe deeply of the crisp floral air that breezes along the wide streets of Fujin City. Though it boasts a slightly higher O<sub>2</sub> percentage than the standard terraformed world, you cannot blame chemistry alone for the euphoria that comes from visiting Saisei.

### HIGHLIGHTS

For those with an eye for the poetry of geometry, from the moment you catch sight of it, the **Fujin Capitol Building** is a visual feast. Engineers broke ground in 2341 based on a design by Jurgen Ganz. The Capitol Building, now used by the planet's Governors Council, eschewed the Modernist movement of the time in favor of the Asharian movement that had recently developed on Mars.

Life can overwhelm. Without taking moments of reflection, it's easy to lose sight of the majesty of the world. When you find yourself in the elysian vistas of **Nessa Park**, take that moment to pause. From perfectly curated botanical gardens to serene ponds, you will find that peace that seems to constantly elude us.





## CRUSADER STANTON

Arriving at the Crusader Visitor's Center, you head straight down the elevator to the Grande Observatory, where the transparent flooring provides unparalleled views of the tempestuous atmosphere below.

### HIGHLIGHTS

Floating in a nest of complicated latticeworks, the **Crusader Industries Shipyards** are prized examples of unintentional art. Watching massive transport ships emerge from nothing as they are constructed by a delicately choreographed ballet of bots and workers can almost feel like magic.



“I find that living in the heavens suits me.”

— Kanile Yuder, Former CEO, Crusader Industries

## GET AWAY . . .

. . . and come together.

Always the primary gathering spot on any 890, this gracious and inviting lounge welcomes all comers. The interior of the 890 Jump is designed to create a unique and impressive environment for you and your guests. Plush seating encompassed by large salon windows provide a panoramic view of your ship's surroundings while the entertainment center brings the latest Spectrum offerings with incomparable clarity.

Whatever your pleasure, this living space readily accommodates.



# CORILLA RIHLAH

---

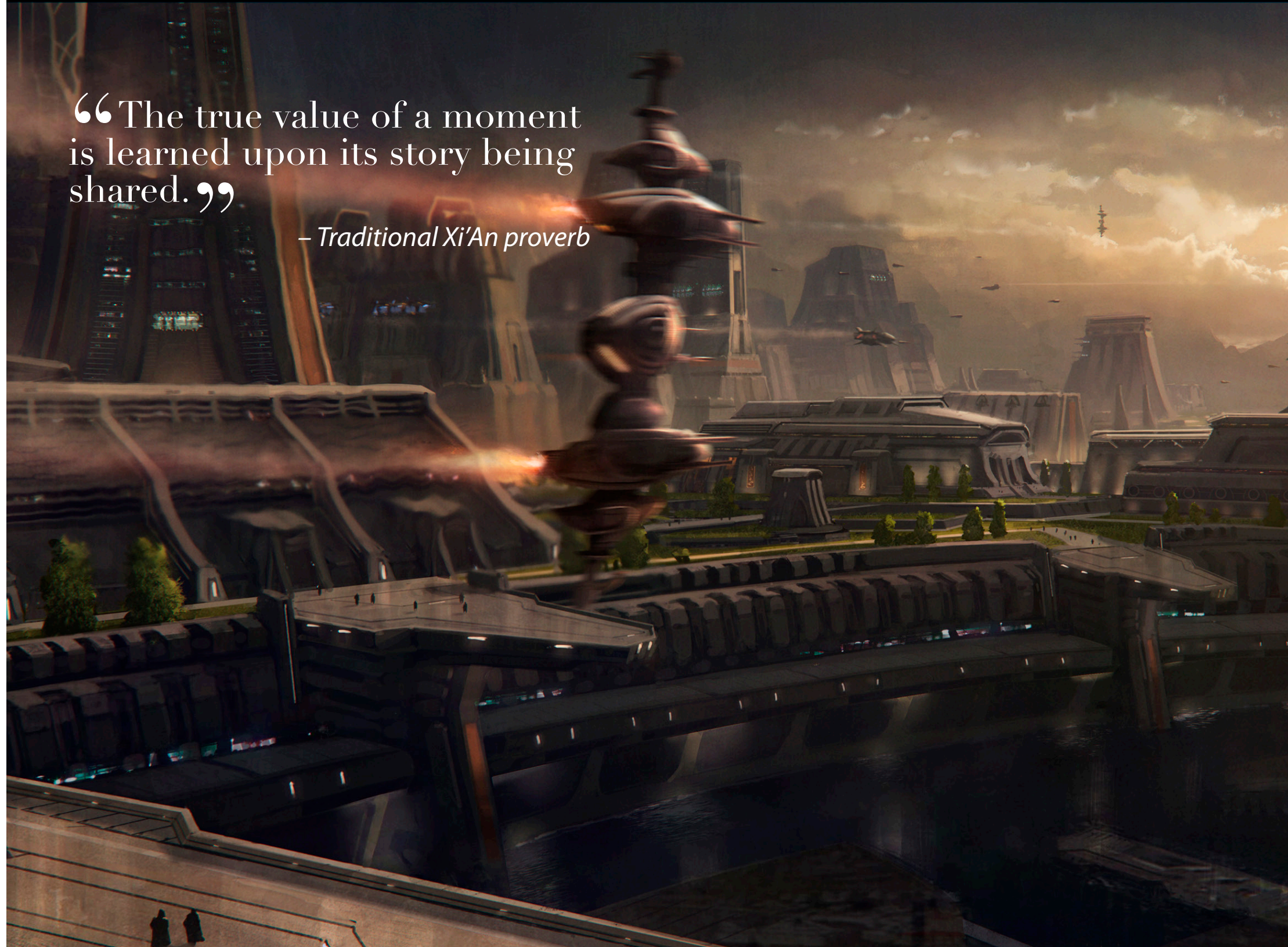
Nestled in the heart of a vibrant jungle, unusual treasures and otherworldly delights are the rule rather than the exception as you explore the narrow byways of Corilla. Drawing in traders from the far corners of the universe, Xi is home to Banu, Xi'An and Humans alike. You will discover a whole new way to shop as you find not what you were looking for, but that special something that you never before knew you wanted.

## HIGHLIGHTS

As the various species have mixed and mingled over the decades, a burgeoning food scene has emerged that specializes in a unique style of cooking — fusing traditional dishes with the fresh local ingredients that abound in the jungle. Dubbed **Xi'Nu** cuisine by the locals, you'll experience flavor combinations that can't be found yet anywhere else as you dine in the **Li'Ong Night Market**.

“The true value of a moment is learned upon its story being shared.”

— *Traditional Xi'An proverb*



---

## TAKE A BREAK

A special place to retreat from the world, each VIP stateroom beckons with unparalleled comfort. The island berth features an oversized imperial gelcore mattress along with two berth end tables. Constructed from specially selected stock of galung wood, known for its natural luster, harmony radiates from this comfortable haven. Sweet dreams and soothing surroundings await all who tarry here.



# SHIP STATISTICS

## BASE STATISTICS

<b>Role</b>	Luxury Touring
<b>Manufacturer</b>	Origin Jumpworks
<b>Max Crew</b>	5
<b>Mass (kg)</b>	202,500
<b>Cargo Capacity (freight units)</b>	1600

## DIMENSIONS

**Vehicle Length / Beam / Height (m)** 123 / 48 / 24

## POWER PLANT, ENGINES, THRUSTERS & SHIELD

<b>Factory Power Plant</b>	RAMP RAMPower AM-R (S5)
<b>Max Power Plant</b>	6
<b>Factory Engines</b>	6x Alliance Startech Stamina V
<b>Max Engines (Primary Thrusters)</b>	6x TR5
<b>Maneuvering Thrusters</b>	10x Origin Omni Elite (TR3)
<b>Factory Shield</b>	Kruger Armaments K-6DB
<b>Max Shield</b>	Size 6

## DEFENSES

**Class 4 Hardpoints** 3x Size 4 (unmanned; rear & sides)

### Class 4 Equipment

2x Gallenson Tactical Phoenix GF-330 laser repeater (S3)  
2x 6x Talon Stalker III IR (S3) on class 4 mounts

### Class 5 Hardpoints

2x size 5 (upper, lower twin turrets)

**Class 5 Equipment** 4x Preacher Alpha 9

**Class 9 Hardpoints** 2x point defense (rear)

**Class 9 Equipment** 2x Kodiak AC Point Defense

## ADDITIONAL EQUIPMENT

**Excursion Jump Engine**

85X Runabout



“Every step, every breath,  
every sound has history to it.  
That’s New York.”

— Ven Orva, Singer



## NEW YORK SOL

The past personified. The city itself stands as a historic reminder of what Humanity once was. You pass through the ever-shifting throngs of people on the sidewalk. The skies overhead jammed with a constant flow of hovers. The buildings of old encased in their protective enclosures, like the city itself is a living museum.

## HIGHLIGHTS

**Magellan’s** is one of New York’s finest institutions, located at the heart of the government center. Executives, politicians, advocates and celebrities have been gathering here for decades.



### SAFEGUARD

For that extra layer of defense, the 890 Jump comes equipped with a rear unmanned turret to cover your blind spot. Origin's turret-control software faithfully translates operator action to the twin Gallenson Tactical Phoenix GF-330 laser repeaters, which offer a devastating rate of fire to deter any would-be assailants.



### PROTECTION

The triple-layered graphene enameled hull and Kruger Armaments K-6DB shield work together to ensure that your craft not only can withstand the vigors of galactic travel, but does so looking as good as the day you bought it.

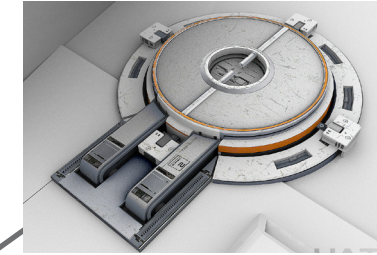


### SECURITY

Comfort is only possible when you feel safe. Featuring Talon Stalker III IR missiles with GuardLoc advanced tracking, the 890 Jump can deliver security one precise payload at a time.

### ACCESS

The 890 Jump has standardized docking hatches for ship-to-ship or EVA needs. Capable of being opened remotely or through the external access panel, the reinforced tri-bonded metholium plating offers exceptional protection against unwanted entry.

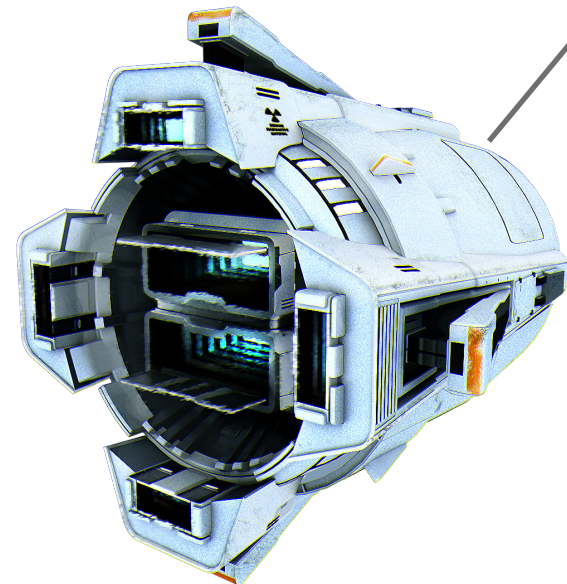
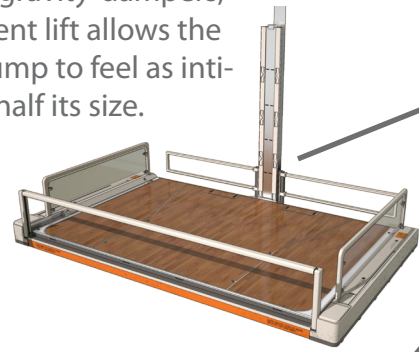


### GRACE

Each of the ten thrusters contain individual actuators that instantaneously adjust the ship's balance to compensate for background gravitational flux, providing the ultimately smooth ride with pinpoint control.

### ELEVATION

By using micro gravity-dampers, this virtually silent lift allows the spacious 890 Jump to feel as intimate as a liner half its size.



### POTENTIAL

Designed cooperatively by ORIGIN's universe-class racing team and Alliance Startech, these engines will get you where you're going, fast. Though, with a ship as comfortable as this, you may wish for the journey to take a little bit longer ...

### AURA

Utilizing much of the same technology used to protect the UEE Navy's vessels from incoming missile fire, the Kodiak AC Point Defense System offers cutting edge rapid-tracking capabilities and multi-point targeting to provide maximum security.

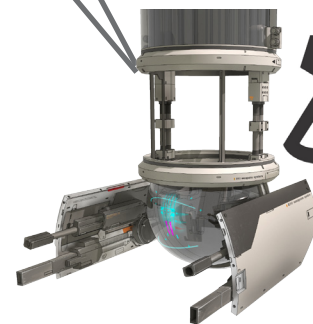
### SURVIVAL

For when the unforeseeable becomes unavoidable, the 890 Jump comes with top-of-the-line ejection and rescue systems. Each pod comes outfitted with QAD beacon technology and enough supplies to live comfortably for several days.



### DETERRENT

While the hope is you never have to use them, the recessed turret mounts are ready to quickly come to your aid should the need arise. Each armed with dual Preacher Alpha 9 laser cannons, you will be able to face whatever dangers you may encounter.



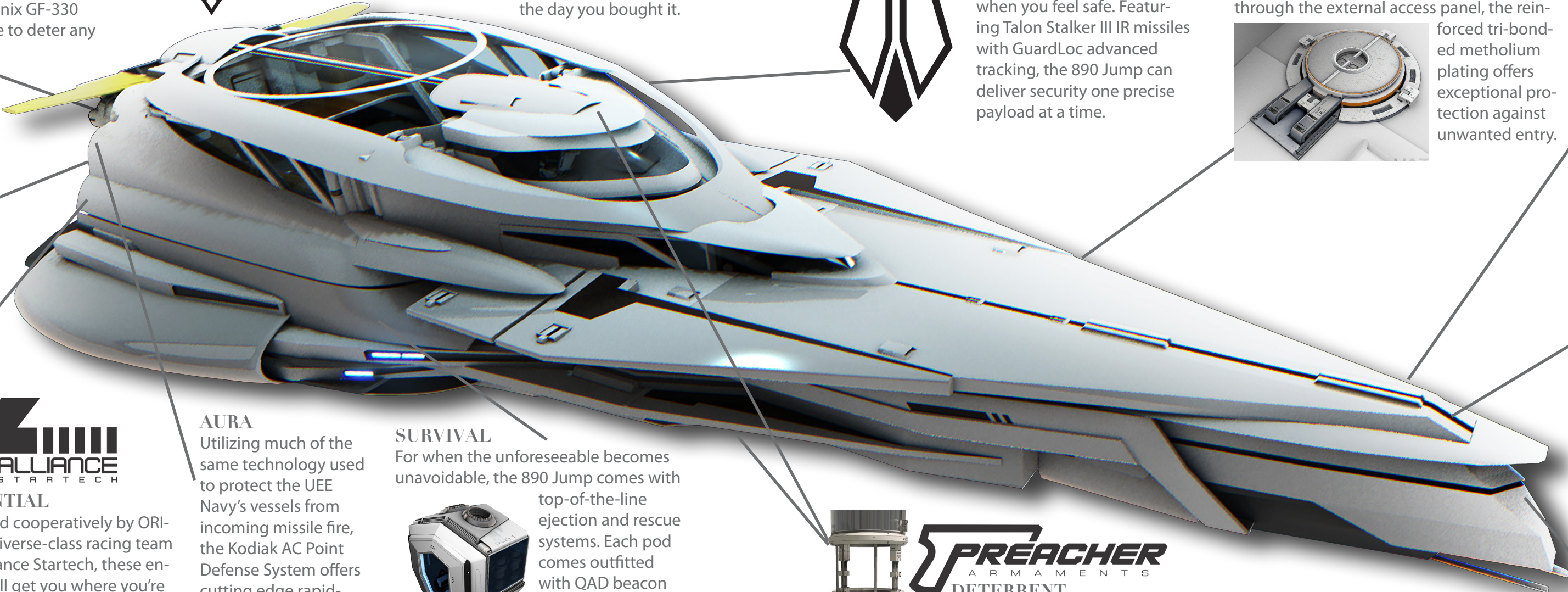
### CONNECTION

Never feel disconnected with the 890's robust communication array from Pythia. You will enjoy uninterrupted productivity with Octa-key security and lossless intra-system data transfer. The life you've left can always be a comm away.



### EXPLORATION

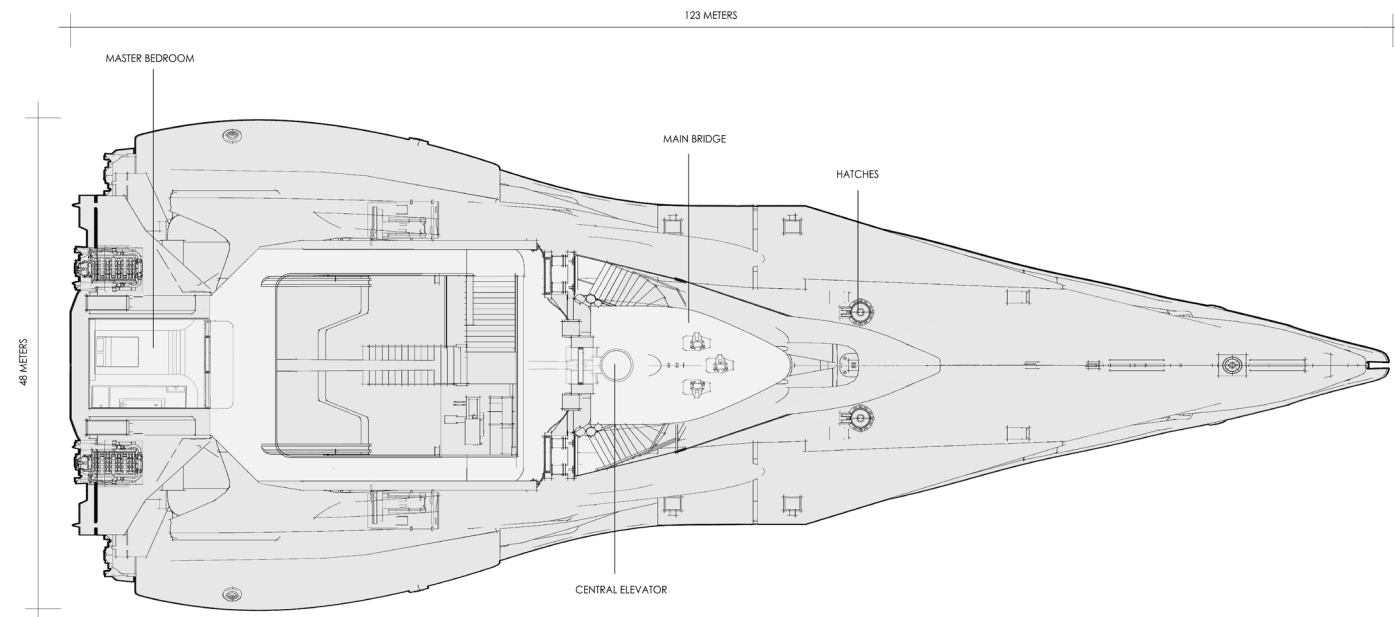
As the beauty and diversity universe sails past, the full spectrum sensor array from WillsOp will ensure that you don't miss a thing.



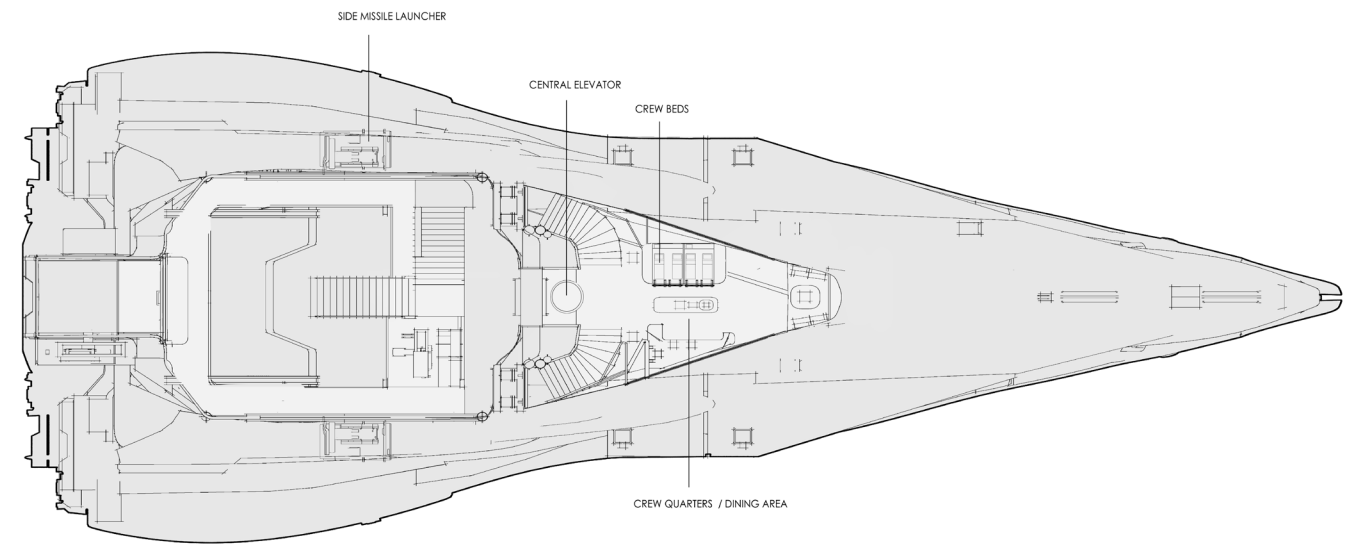


# DECK PLAN CONCEPTS

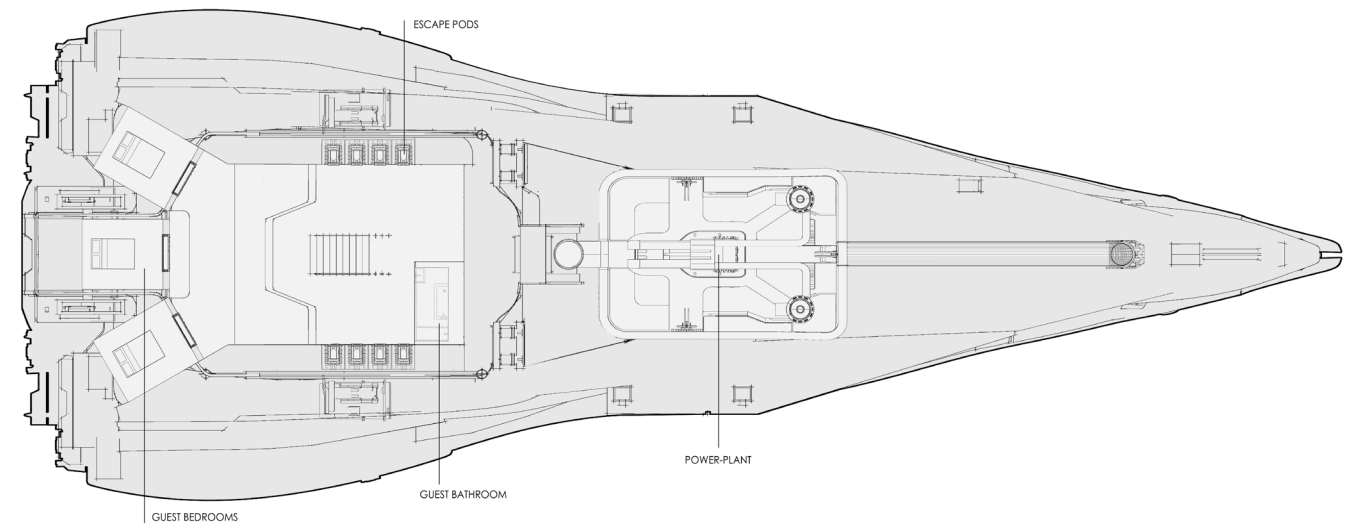
DECK 01



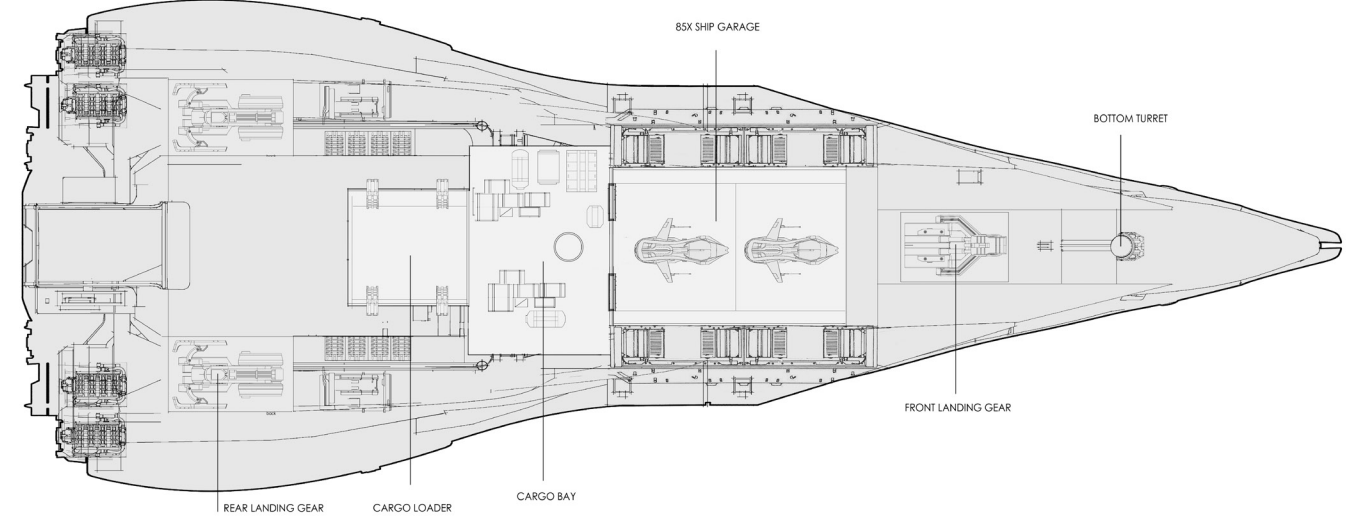
DECK 02



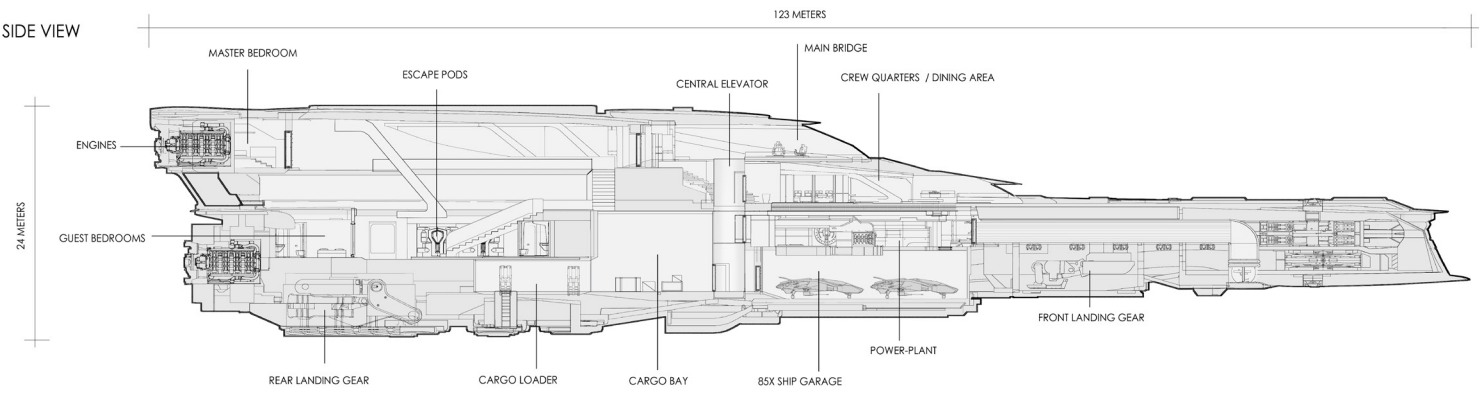
DECK 03



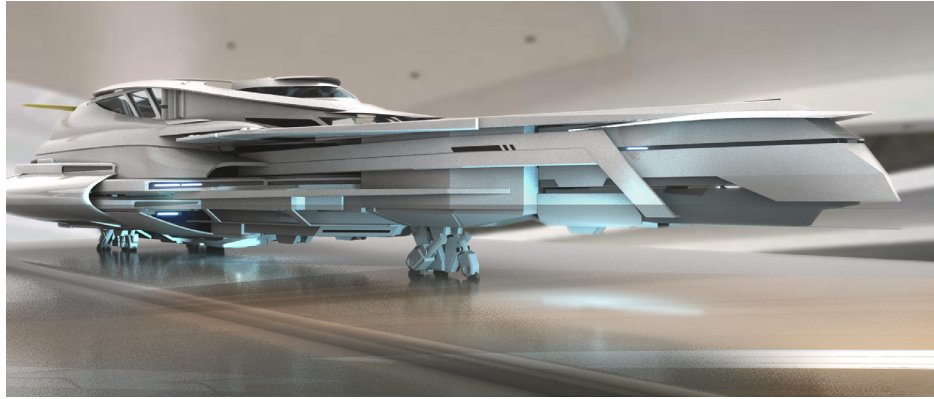
DECK 04



SIDE VIEW







---

## PEACE OF MIND

While the true investment in an 890 Jump is the lifestyle that it enhances, we at ORIGIN know that there are practical matters as well. To that end, we have partnered with **ECLIPSE MUTUAL** to offer a comprehensive lifetime insurance package available at no additional cost as part of our exclusive presale package.

Founded in 2814 by **Rachel Lor** and **Arthur Wyng**, ECLIPSE MUTUAL has consistently provided premier ship and life insurance by working directly with policyholders to find protection plans that fit their lifestyle.



“People argue about what makes flying at New Horizon so dangerous. Truth is, it’s how damn beautiful the place is. Talk about distracting.”

– Paulio Nefford, Murray Cup Pilot

---

## GREEN ELLIS

A world of nothing but beach front property, you would expect all eyes on Green to be focused on the stunning ocean views. Instead, you know to keep your eyes pointed towards the sky. While the luxury towers and mega-resorts of Aydo will impress with their world renowned hospitality, the real draw is what is happening overhead — Murray Cup racing.

### HIGHLIGHTS

Universally renowned, the **New Horizon** track is home to some of the most white-knuckle racing done on the Murray Cup circuit. Grab a front row seat in one of the many casinos or lounges that hover close by and enjoy some window-rattling action. When the race is over, keep the excitement going and visit the **MCR Museum** to revel in 500 years of full throttle history.





## JATA DAVIEN

Every metropolis hums with a life of its own, and Jata is no different ... except that its hum is a bit louder. Aside from the near-constant buzz of commerce, Jata thrives under the protective canopy of biodomes that help supplement the planet's naturally thin atmosphere.

### HIGHLIGHTS

Dubbed the Gateway to the Eastern Empire, the constant stream of haulers that visit Jata have resulted in one of the most vibrant night-lives to be found in the UEE. For non-stop entertainment options that will guarantee you a night (or day) to remember, head down to the **Cracked Dome District**. Though the crack was repaired long ago, the district still features a unique air mix that puts all in the mood to party.

“A lot can change in a single jump.”

*Vernon Tar, NavJumper,  
First Contact with Banu*



## GRAND PRECISION

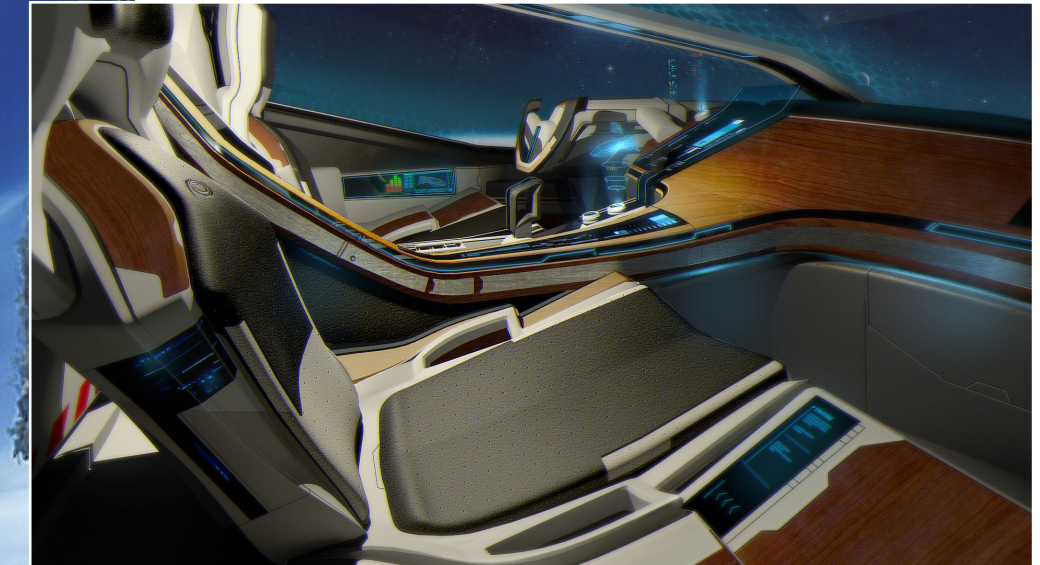
For ultimate comfort and convenience, very accommodating crew quarters await your staff in the 890 Jump. Among its many features, it includes a streamlined, wrap-around storage area and pantry, along with generous seating and workspace. Why shouldn't a first-class vessel allow everyone to travel the stars in style?



# 85X

There are those who feel that luxury can be bound, confined to a single hull, or ascribed a value, but those who know the truth understand that luxury is a way of being. It is effortless control. Luxury is about establishing a presence, without saying a word.

When the 890 Jump needed an away-ship, the designers at Origin didn't just settle for another shuttle. They refused to compromise, but instead of starting from scratch, they tapped the prodigious talent and genius of our own company.



Model XVB began life as one of many prototypes for the award-winning Origin Racing Team. It went through rigorous testing alongside other cutting-edge speedsters to find that edge in competitive racing. Although Origin ultimately selected the model that would become the M50, the XVB was not forgotten, and found new life as a companion ship for the 890 Jump.

Now, Origin is proud to unveil the 85x. Whether descending down to the planet surface or taking in the sights of your system, the 85x will continue the 890's proud tradition of turning heads. It's the power of a racer with the reliability of a touring ship.

Simply put, it's luxury.



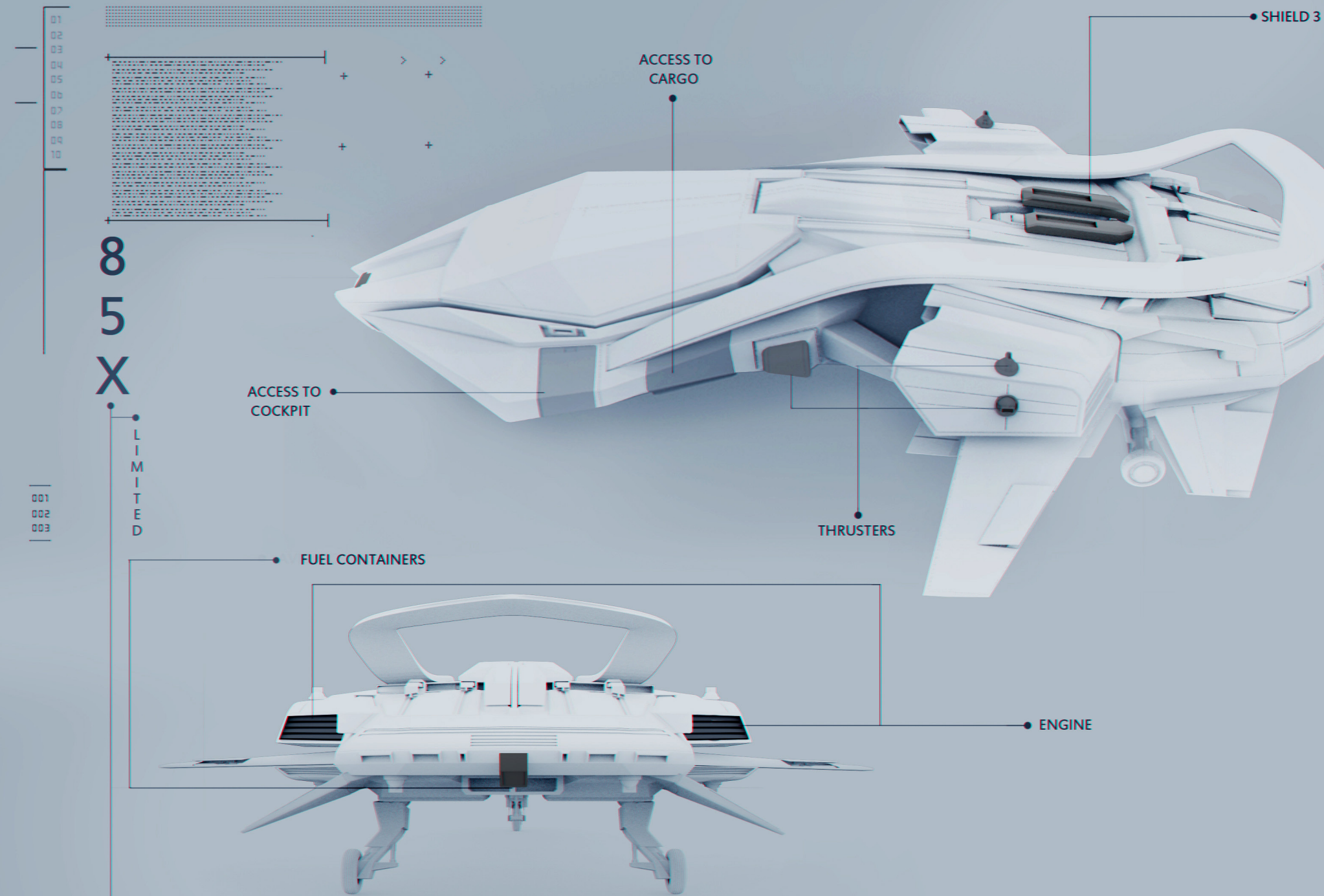
# 85X

Elegantly styled and meticulously constructed, the 85X is a versatile and comprehensive away-vessel for the 890 Jump.

## HIGHLIGHTS

This two-seater offers precision control in and out of atmosphere. The 85x utilizes much of the same thruster technology as the 300 series.

MicroTech's Providence system allows personalized access to the 85X's systems, but also stays in contact with your 890 Jump to make sure that you are constantly up to date on your ship's status.



## 85X STATISTICS

### Base Statistics

Role	Runabout
Manufacturer	Origin Jumpworks
Max Crew	2
Mass (kg)	13,000
Cargo Capacity (Freight Units)	-

### Dimensions

Vehicle Length / Beam / Height (m)	9 / 7 / 3
------------------------------------	-----------

### Power Plant, Engines & Thrusters

Factory Power Plant	Ace Astrogation FusionAce 3H (11)
Max Power Plant	1
Factory Engine	2x Hammer Propulsion HM 4.2
Max Engine (primary thrusters)	2x TR2
Maneuvering Thrusters	8x TR1
Factory Maneuvering Thrusters	6x Origin Scalpel 2x Origin Omni

### Armament

Class 1 Hardpoint	2x size 1 (wings)
Class 1 Equipment	2x Preacher Prophet 1 (S1)

### Shield & Cooling

Factory Shield	Gorgon Defender AllStop (S2)
Max Shield	2
Cooling System	J-Span Micro-Frost





Based on Terra in the heart of Human civilization, ORIGIN Jumpworks GmbH has been designing and manufacturing high performance spacecraft and components for over two centuries. From the unparalleled velocity of the M50 to the spacious luxury accommodations of the 890 JUMP, ORIGIN has engineered a solution for every lifestyle.

From high-tensile multimetal structural components rated for 150% survivability in the deadliest spatial environments to stylish interiors refined by Johann Hexlairre and the finest team of designers in the galaxy, ORIGIN spacecraft are more than the sum of their parts. All ORIGIN craft feature standard-defining upgrade mounts and technology access points.

Only the highest quality component options are standard or made available as options at ORIGIN showrooms across known space.

All ORIGIN models are manufactured in a closed-cycle; everything from starship wing spars to cup holders are designed and constructed by ORIGIN engineers at ORIGIN-owned factories. You fly the

spacecraft we imagined, with absolutely no compromises. Add to the equation unparalleled safety ratings and flight effectiveness scores and you know that choosing to pilot an ORIGIN spacecraft is putting your life in the best possible hands.

The models featured in this publication are approved for use in the UEE. Some items of equipment are available as extra-cost options only. Availability may vary from market to market due to local restrictions and regulations. For information on standard and optional equipment, please consult your local Origin Dealer.

All information in respect of construction, features, design, armaments, dimensions, weight, power output and running costs is correct at the time of going to print (2944-10-10). Origin reserves the right to alter specifications without prior notice.

Colors may differ from those illustrated.

Errors and omissions excepted.

© ORIGIN JUMPWORKS GmbH, 2944

All text, images and other information in this publication are copyright

ORIGIN JUMPWORKS GmbH

No part of this publication may be reproduced or transmitted, in any form or by any means, without prior permission in writing from ORIGIN JUMPWORKS GmbH.

ORIGIN JUMPWORKS GmbH  
Marketing Dept.  
3245 N 467th Street  
Prime, Terra

Alliance StarTech and its logo are registered trademarks of Alliance Industries Inc. and used by permission.

Gallenson Tactical and its logo are registered trademarks of Gallenson Tactical LLP and used by permission.

Kruger Armaments and its logo are registered trademarks of Kruger Intergalactic and used by permission.

Preacher Armaments and its logo are registered trademarks of Orwall & Associates and used by permission.

Talon Weapons Systems and its logo are registered trademarks of Talon Inc. and used by permission.

WillsOp and its logo are registered trademarks of WillsOp Systems LLC and used by permission.

Valid from: 2944-10-10 SET