



ROBERTS SPACE INDUSTRIES  
SCORPIUS

“The very  
definition of a  
game changer”

► Commander Vic Jakarte,  
999th Squadron



ROBERTS SPACE INDUSTRIES  
SCORPIUS



INTRODUCTION  
LETHAL  
ENFORCER

From RSI's celebrated Applied Innovations division in Killian and the same engineers that brought you some of the galaxy's most vaunted war machines comes the next evolution in heavy combat, interception, and defense – the RSI Scorpius.

With an adaptable bi-wing configuration and revolutionary rail-mounted remote turret, the Scorpius offers unprecedented fire coverage, allowing for both defensive and assault-minded applications.

Fully endorsed by the UEE Navy, and with glowing reports from the Wreckless 999th test squadron and Civilian Defense Force, the Scorpius is the ultimate enforcer; it's the perfect complement to any battle-ready fleet looking to make its enemies fear the sting of justice.

“one taste of that turret &  
the local gangs  
packed up”

▶ Linda Garabino,  
Campbell Five-Star Security

“We hired on with this up-and-coming shipping org that was starting to do real numbers pushing ore, and we were catching all manner of hell from local scum, escorting convoys through Cano.

Then RSI hooked us up with a couple of these new Scorpius fighters and let me tell you, one taste of that turret and the local gangs packed up and moved right out of the system.”





UNRIVALLED FIREPOWER

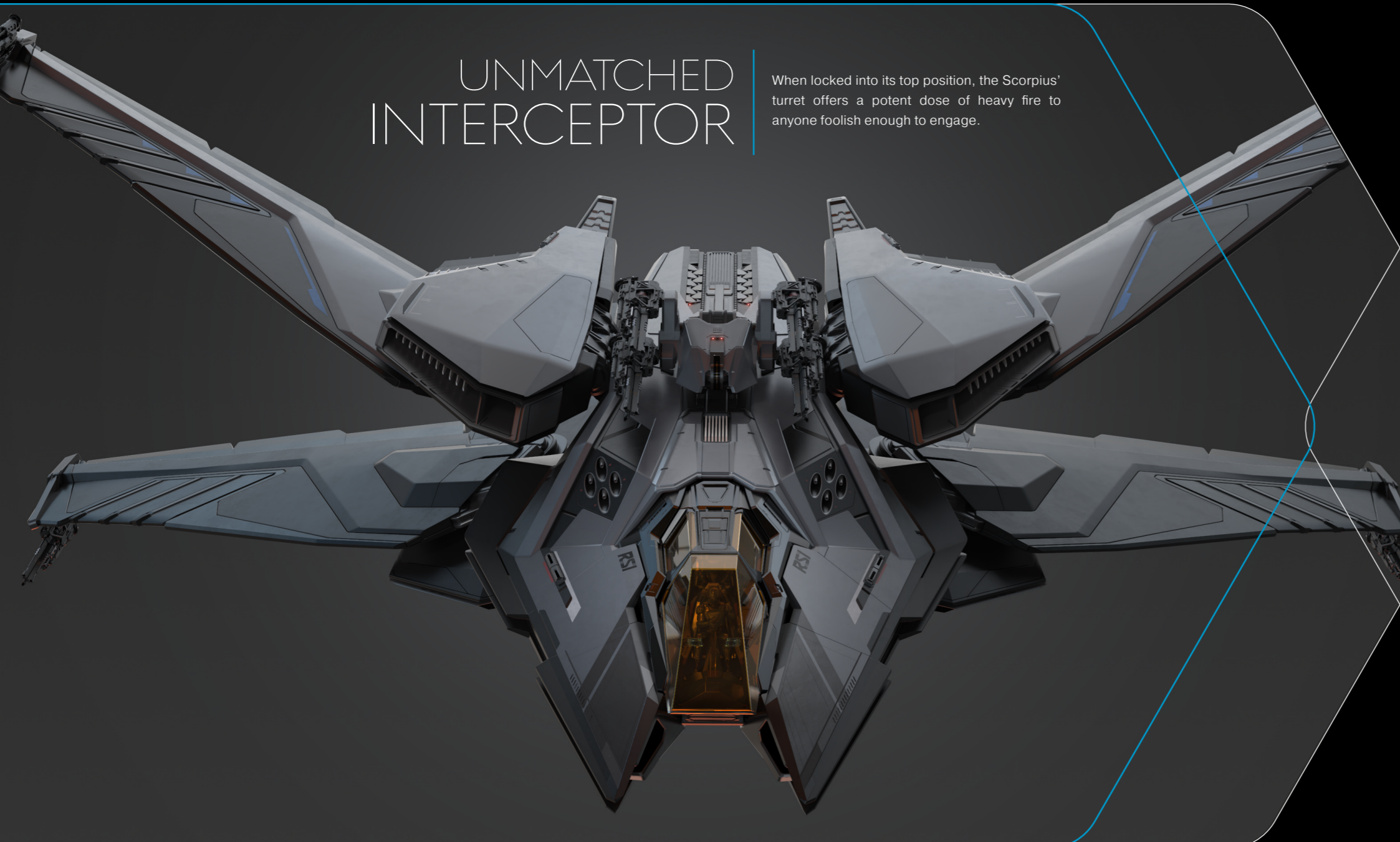
# RAIL MOUNTED REMOTE TURRET

Developed by the infamous Applied Innovations division at RSI's facilities in Kilian, this remotely operated, rail-mounted turret sports Size 3 repeaters and can be positioned above or below the main chassis for offensive or defensive maneuvers respectively.

Truly the heart of the Scorpius, the turret's ability to be effortlessly controlled via the cockpit and its utter dominance in combat, as tested in the field by some of the galaxy's top militias and security outfits, make it the most dominant two-person interceptor the galaxy has seen.

# UNMATCHED INTERCEPTOR

When locked into its top position, the Scorpius' turret offers a potent dose of heavy fire to anyone foolish enough to engage.

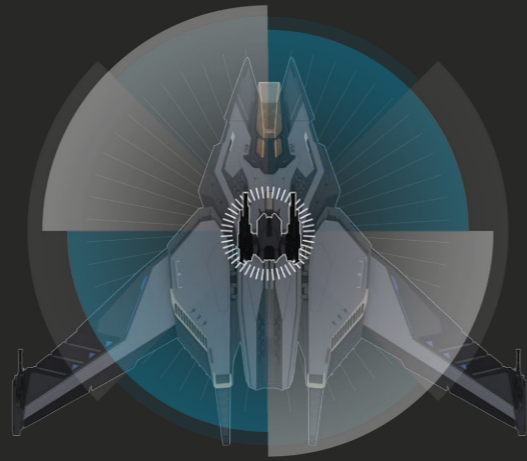
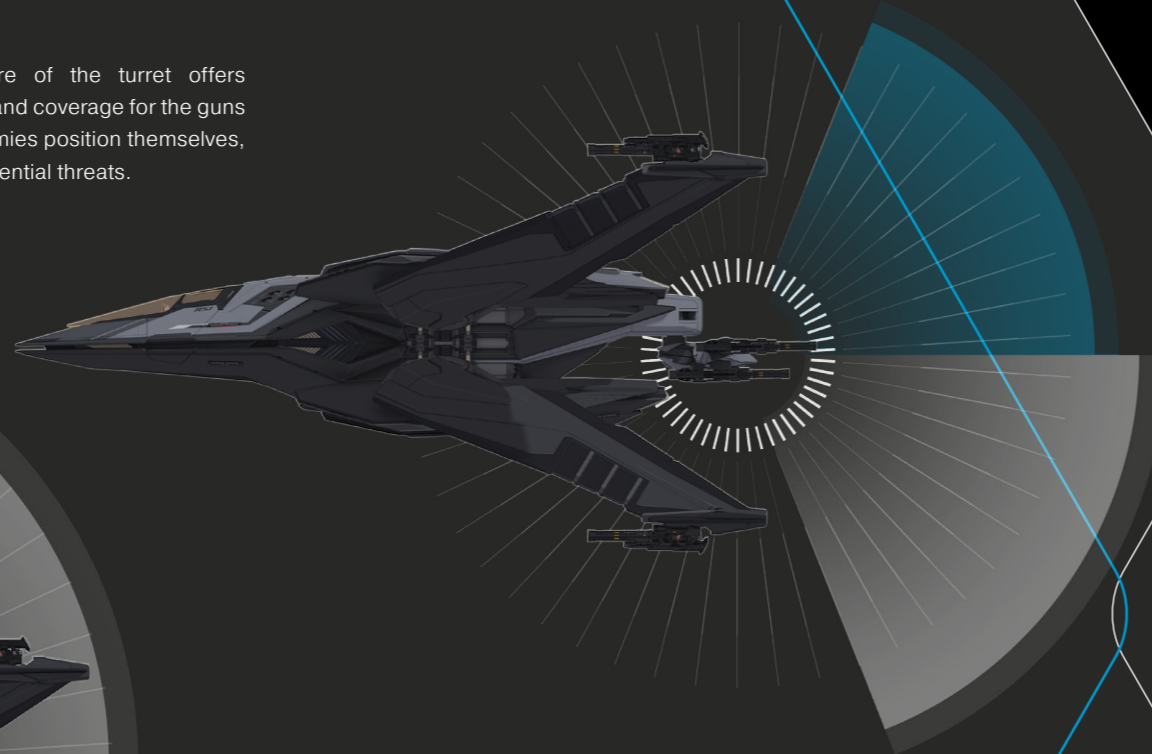
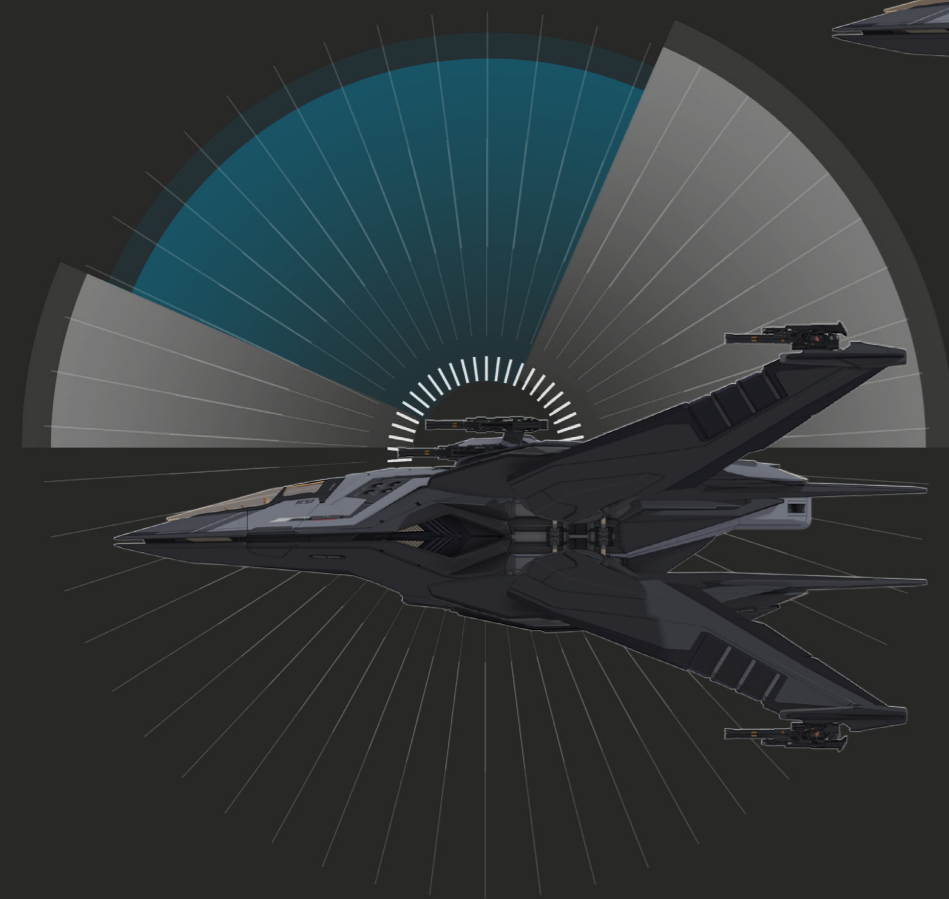


# FEEL THE STING

The Scorpius' turret comes factory-equipped with Size 3 ballistic cannons, but its four hardpoints are fully customizable and well-suited to whatever loadout suits the mission at hand.

# FIRE ARC COVERAGE

The convertible nature of the turret offers unprecedented range and coverage for the guns - no matter where enemies position themselves, the turret shreds all potential threats.



# WATCH YOUR BACK

Lock the turret into its lower position and take out any threats attacking from behind or flanking the rear.



“You’d think a turret on a rail would be clunky...  
 but in the case of the Scorpion  
 you’d be thinking dead wrong”

▶ Dallas Dixon,  
 Blacjac Security

“I’ll admit we were a little skeptical when RSI delivered these things, but after we got ‘em out into open airspace, and really let ‘em rip, we were converted pretty quickly. I mean, you’d think a

turret on a rail would be clunky, especially on a chassis of this particular class, but in the case of the Scorpion you’d be thinking dead wrong.”





# CONVERTIBLE SPACEFRAME

With two distinct wing configurations, the Scorpion is built to maximize efficiency, cruising speed, and combat maneuver proficiency while flying while minimizing its profile while landed. For flight or storage, the Scorpion's frame adapts to fit.



# READY FOR ANYTHING

The Scorpion's pure firepower means it can take on any foe in almost any situation, and its convertible frame makes it ideal for carriers of varying class. Patented shock/lock resistance makes the transition to flight mode smooth and speedy. Its ferocity and versatility mean the Scorpion is truly the next level of two-seater heavy fighters.

“These Scorpius fighters absolutely sing in all sorts of disparate combat situations”

▶ Lt. Commander Gaba Verner,  
188th Squadron

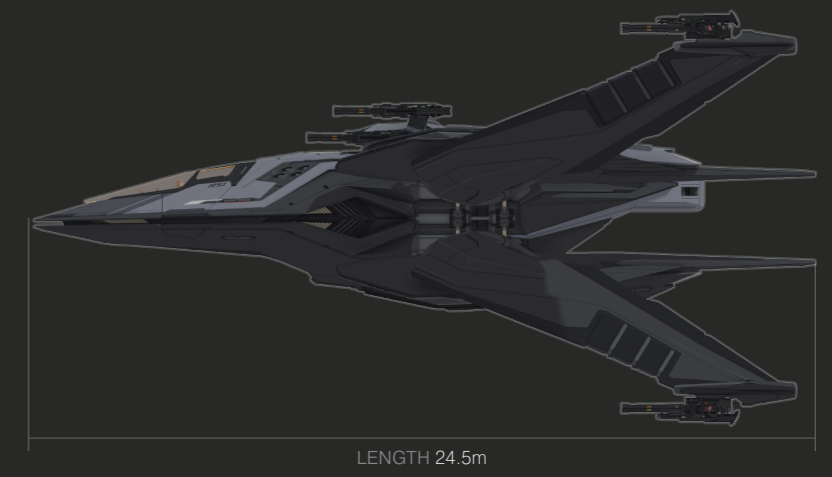
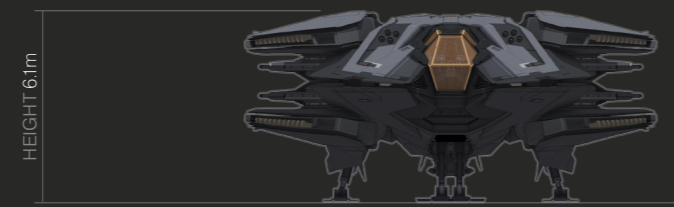
“These Scorpius fighters absolutely sing in all sorts of disparate combat scenarios. Once the Wreckless put them through their paces, we got our hands on a couple and not only did they

absolutely shred the ██████████ in a skirmish over ██████████, they showed great promise in ██████████ and recon operations into ██████████.”



# DIMENSIONS & SPECIFICATION

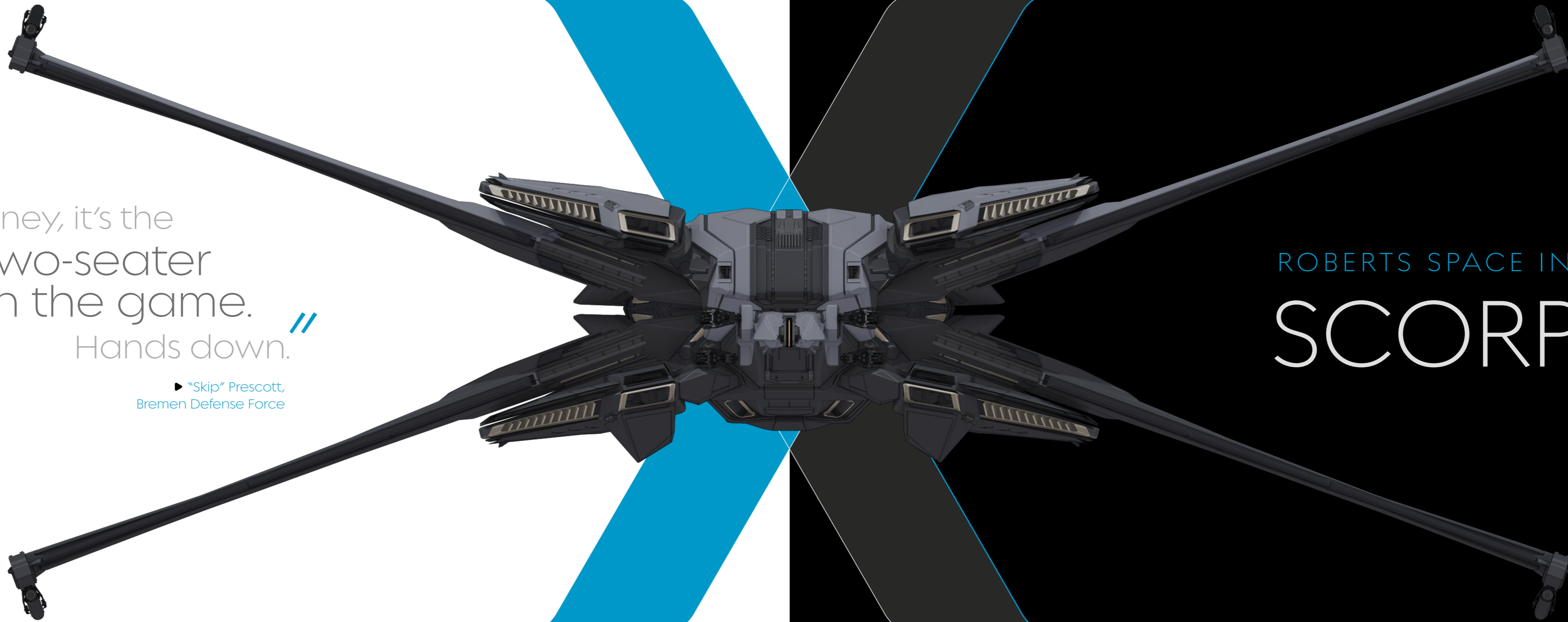
MAX SEATS	2 (Pilot/Co-pilot)
CARGO CAPACITY	NA
LIFE SUPPORT	1x Small
SHIELD GENERATOR	2x Small
POWER PLANT	2x Small
JUMP DRIVE	1x Small
QUANTUM DRIVE	1x Small
QUANTUM FUEL TANK	1x Small
MAV THRUSTERS	2x Retro 8x Mav
PILOT CONTROLLED WEAPONS	4x S3 Gimbal Hardpoints (S2 Laser Repeater)
TURRET	1x Remote Turret (4x S3 Laser Repeaters)
MISSILES	8x S2



“For my money, it’s the  
best two-seater  
in the game.”  
Hands down.”

► “Skip” Prescott,  
Bremen Defense Force

ROBERTS SPACE INDUSTRIES  
SCORPIUS





The models featured in this publication are approved for use in the UEE. Some items of equipment are available as extra-cost options only. Specifications accurate at date of publish. For information on standard and optional equipment, please consult your local Dealer. Specifications, features and appearance are subject to revision during development.

© 2021 Cloud Imperium Rights LLC and Cloud Imperium Rights Limited. Star Citizen® and Roberts Space Industries® are registered trademarks of Cloud Imperium Rights LLC