

**DRAIKE**  
**INTERPLANETARY**

2947 BROCHURE



---

---

## A letter from Drake's CEO

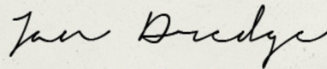
---

---

**We would normally start these letters: “introducing the 2947 Dragonfly.” But let’s be honest: you already know the Dragonfly.**

As a tried and true space pilot, you know the feeling of sheer acceleration, the indescribable sensation of a mere suit separating you from deadly vacuum. You know that performance is what separates a job well done from a frozen death on a distant moon. And as a Drake customer, you’re someone who understands that real life isn’t about plush interiors or fancy sensor suites... it’s rough, tough and winning it means having tools to kick some ass.

All our engineers did was turn what you already know into an entirely new kind of spaceship. Introducing your 2947 Drake Dragonfly: totally different, undeniably Drake.



---


---

**Jan Dredge**  
CEO and Pilot  
Drake Interplanetary

---


---





Feel that? It's pure acceleration. The Dragonfly isn't a ship, it's a seamless extension of your whole body. There's nothing between you and the void... and like all great pilots, you can hear the void calling. The Drake Dragonfly is fully rated to operate in planetary orbit, deep space and beyond.

**DRAKE**  
INDUSTRIES



What good is traveling the stars if you're stuck taking a bus at your destination? The Drake Dragonfly doesn't just tear up the spacelanes, it effortlessly adapts to planetary ground travel, both on and off-road! Whether you're blazing trails on a newly discovered world or just want to run circles around the 9-to-5 crowd on their commute, there's no other choice.

**DRAKE**  
LIBERTY/INTEGRITY





Take a good look at the Dragonfly, because under normal circumstances all you're going to see is its dust. The Dragonfly is built around a simple philosophy: there's nothing more important than acceleration and manoeuvrability. The fully open pilot's seat and the rear-facing passenger slot allow the Dragonfly to behave more like a surgical instrument than a ship. Go ahead, leave them all behind.

**DRAKE  
OSBORN**





Who says you can't take it with you? You already know the Dragonfly goes where you go... and it's also designed to live how you live. With the smallest available footprint and a compact design, the Dragonfly can easily stow away in an over-crowded garage, the tightest hangar or the smallest capital ship. Because part of owning a reliable machine should be having it there when you need it.

**DRAKE**  
ULTRA-ANTIMATTER



**DRAKE**  
**INTERPLANETARY**  
OFFICIAL SPONSOR

DRAKE INTERPLANETARY IS A PROUD SPONSOR OF THE  
**AMATEUR OPEN CANOPY** RACING LEAGUE  
YOU CAN'T WIN IF YOU DON'T RIDE



**DRAKE**  
**INTERPLANETARY**

YELLOW IS THE NEW BLACK





**DRAKE**  
**INTERPLANETARY**

YELLOW IS THE NEW BLACK

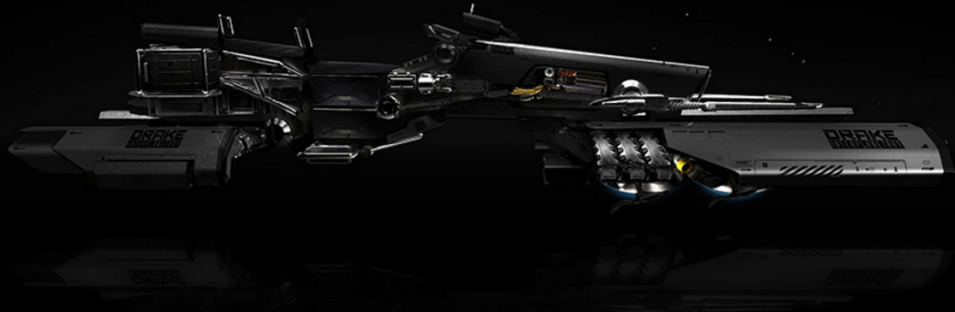
# DRAKE INTERPLANETARY

YELLOW IS THE NEW BLACK

Don't just be the first to own a new Dragonfly, show the world. The Drake Dragonfly is being produced in a launch-exclusive yellowjacket-and-chrome paint scheme to inaugurate a new kind of travel. This scheme is available only through authorized pre-orders. See your Drake Interplanetary dealer today, before it's too late.

DRAKE  
INTERPLANETARY





**DRAKE**  
**INTERPLANETARY**

GO DARK





**DRAKE**  
**INTERPLANETARY**

GO DARK

**DRAKE**  
**INTERPLANETARY**

GO DARK

Want to get where you're going without so much flash? The standard production model of the Dragonfly includes the Singularity paint scheme, featuring a deep black look with matte highlights. It's elite sophistication and genuine class for a ship that doesn't need to beg for either. Other color options are available, see your local Drake Interplanetary dealer for details.

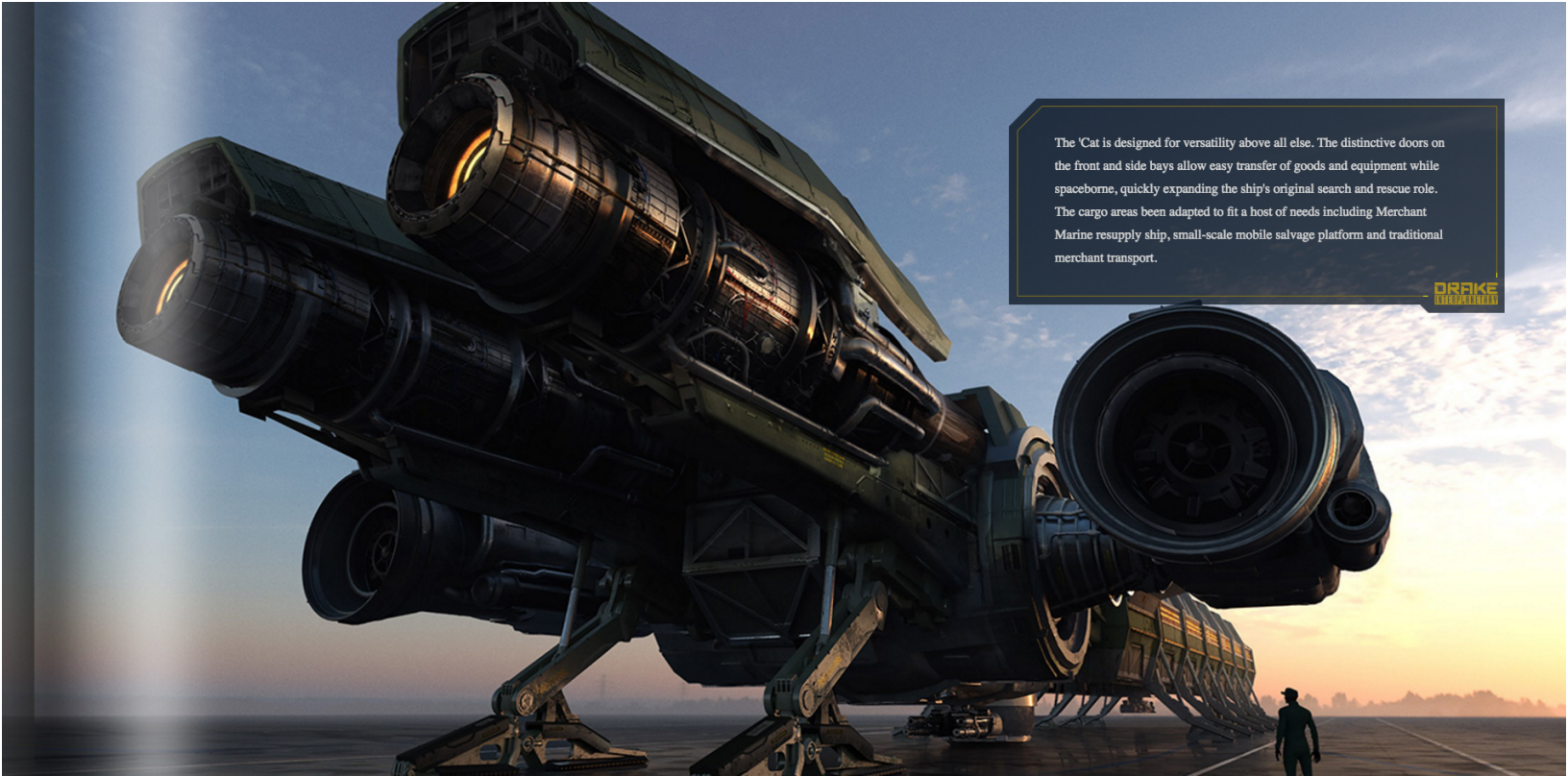
**DRAKE**  
**INTERPLANETARY**





You already know how reliable the Drake Caterpillar platform is. We're pleased to announce that the Dragonfly has been designed specifically to work alongside the Caterpillar's existing infrastructure. Up to three Dragonflies can be stored in each of this very hungry ship's modular cargo units and deployed while in flight. There's no better way to get a squadron of Dragonflies from place to place than aboard a Drake Caterpillar!






The 'Cat is designed for versatility above all else. The distinctive doors on the front and side bays allow easy transfer of goods and equipment while spaceborne, quickly expanding the ship's original search and rescue role. The cargo areas been adapted to fit a host of needs including Merchant Marine resupply ship, small-scale mobile salvage platform and traditional merchant transport.

**ORAKE**  
TECHNOLOGIES



A futuristic racing vehicle, possibly a dragonfly, is shown in motion on a dusty, reddish-brown planet surface. The vehicle is emitting a bright blue light trail as it moves. In the background, there is a large, dilapidated structure, possibly a building or a piece of machinery, with significant damage and debris. The overall atmosphere is one of a rugged, alien environment.

**WHY DREAM,  
WHEN YOU CAN RIDE?**

**DRAKE**  
INTERPLANETARY

BECOME THE PILOT YOU WERE ALWAYS MEANT TO BE.  
DRAKE INTERPLANETARY FLIGHT ACADEMY NEW RIDER COURSE  
PROVIDES ALL THE TRAINING YOU NEED TO MAKE A DRAGONFLY TRULY SOAR.



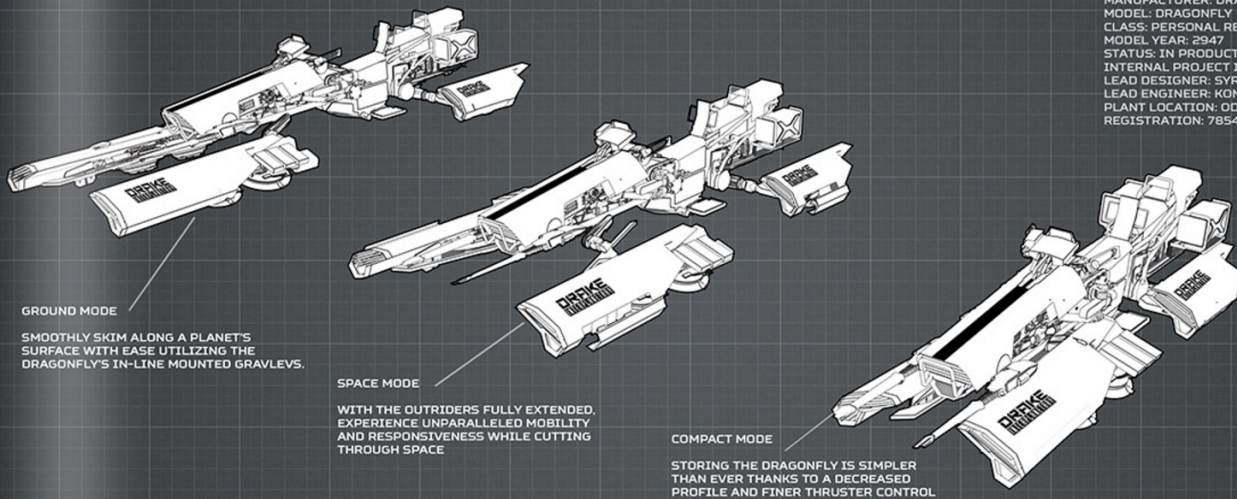






# DRAGONFLY

MANUFACTURER: DRAKE INTERPLANETARY  
 MODEL: DRAGONFLY  
 CLASS: PERSONAL RECREATION VEHICLE  
 MODEL YEAR: 2947  
 STATUS: IN PRODUCTION  
 INTERNAL PROJECT ID: TOOTHPICK  
 LEAD DESIGNER: SYRA WALCOTT  
 LEAD ENGINEER: KONNEL DAWSON, EEM  
 PLANT LOCATION: ODYSSA, BOREA  
 REGISTRATION: 7854-DG-54T-87



GROUND MODE

SMOOTHLY SKIM ALONG A PLANET'S SURFACE WITH EASE UTILIZING THE DRAGONFLY'S IN-LINE MOUNTED GRAVLEVS.

SPACE MODE

WITH THE OUTRIDERS FULLY EXTENDED, EXPERIENCE UNPARALLELED MOBILITY AND RESPONSIVENESS WHILE CUTTING THROUGH SPACE

COMPACT MODE

STORING THE DRAGONFLY IS SIMPLER THAN EVER THANKS TO A DECREASED PROFILE AND FINER THRUSTER CONTROL





**DO THE JOB  
MAKE YOUR MARQUE**

**TWO MISSILE PYLONS  
FIVE GUN MOUNTS  
ONE HECK OF A RIDE**

**DRAKE  
INTERPLANETARY**

**BUCCANEER**



## PRE-ORDER YOUR DRAGONFLY IN LAUNCH-EXCLUSIVE YELLOWJACKET TODAY!

OTHER COLOR CHOICES WILL BE AVAILABLE ON LAUNCH, CHECK YOUR DEALER FOR AVAILABILITY OR CONTACT DRAKE INTERPLANETARY DIRECTLY FOR MORE INFORMATION.

GLOSS

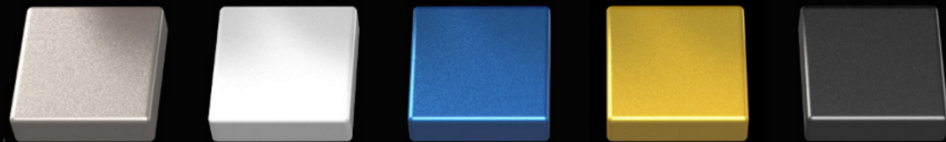


GLOSS



MATTE


METALLIC





**kastak arms**

**RIDE SAFELY**



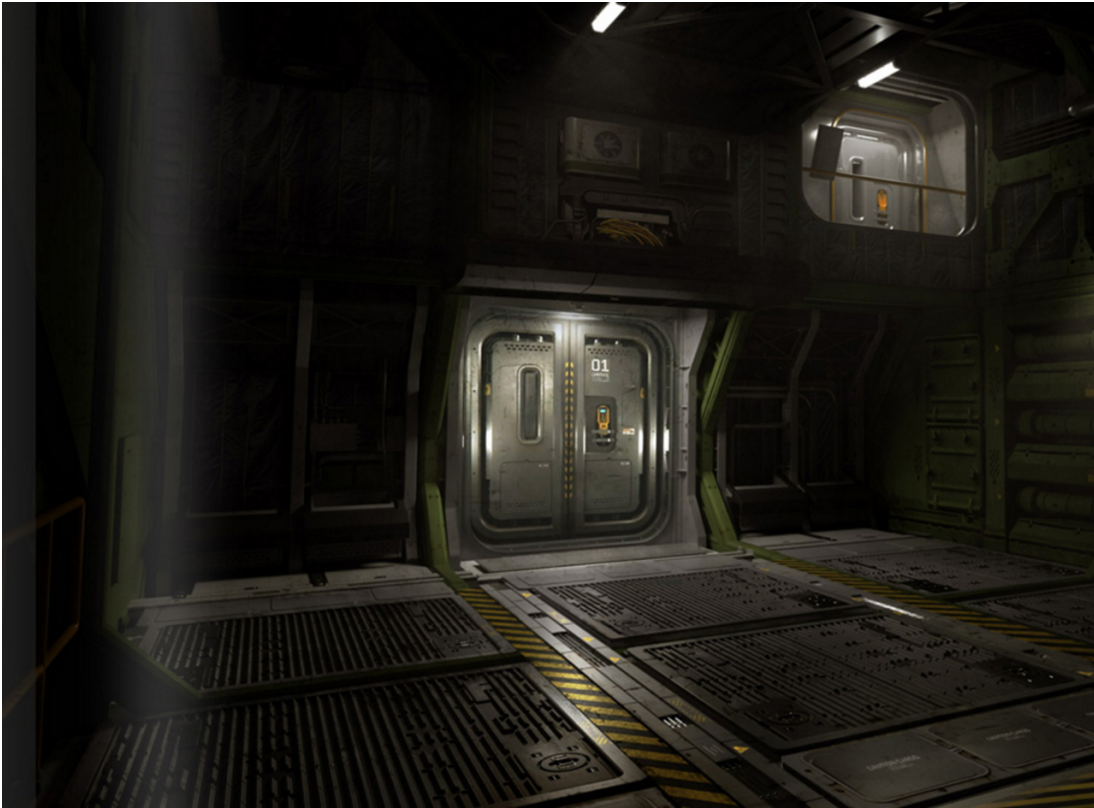
There is a deep thunder on the horizon for the 137th Annual Hyperion Rally.

December 8-14, 2946 is shaping up to be one of the greatest and perhaps largest gathering of open canopy ship enthusiasts of all time. Come meet good people, listen to live music, and participate in zero-G and hypercross races all in a place where the locals can still show you a thing or two about hospitality.

Plus, you won't want to miss the chance to survey wares from some of the best dealers around, including the chance to test fly the all new 2947 Dragonfly from Drake.







**YOU'VE GOT YOUR DRAGONFLY,  
NOW MAKE SURE YOU KEEP IT.**

Request a free open canopy insurance quote from ProtLife on the coverage you need so whether you're enjoying a long trip through the 'verse or having your ship stored away for transport your vehicle will always be protected.

If you just bought your Dragonfly or if you're ready to shop for a new plan, having the right policy means you can just sit back and enjoy the ride.

**ProtLife**



**DRAKE**  
INTERPLANETARY

ALL INFORMATION IN RESPECT OF CONSTRUCTION, FEATURES, DESIGN, ARMAMENTS, DIMENSIONS, WEIGHT, POWER OUTPUT AND RUNNING COSTS IS CORRECT AT THE TIME OF GOING TO SPECTRUM (2946-06-06). DRAKE INTERPLANETARY RESERVES THE RIGHT TO ALTER SPECIFICATIONS WITHOUT PRIOR NOTICE. COLORS MAY DIFFER FROM THOSE ILLUSTRATED. ERRORS AND OMISSIONS EXCEPTED. ALL TEXT, IMAGES AND OTHER INFORMATION IN THIS PUBLICATION ARE COPYRIGHT DRAKE INTERPLANETARY, 2946. NO PART OF THIS PUBLICATION MAY BE REPRODUCED OR TRANSMITTED, IN ANY FORM OR BY ANY MEANS, WITHOUT PRIOR PERMISSION IN WRITING.