



ORIGIN  
JUMPWORKS

Style  
Meets  
Substance



**ORIGIN**  
Jumpworks  
100 SERIES

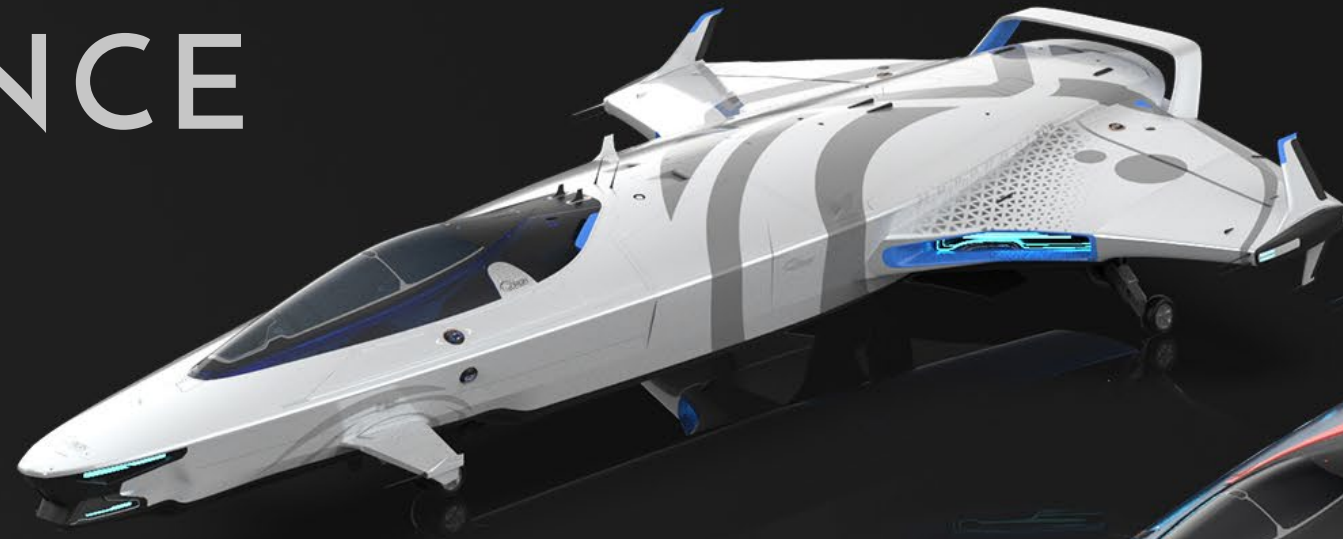
# ADVENTURE

Evolved



# PERFORMANCE


## Reimagined



100i 


*Easy on the eyes, as well as the environment. Tour the universe with the perfect coupling of luxury and performance.*



135c 

*Built for musicians, couriers, and anyone with precious cargo to transport. Get it there fast, and look good while you're doing it.*



125a 

*The definition of grace under fire. Risks were meant to be taken, but why risk running out of fuel in the heat of battle?*

# EXTREME TOURING

## 100i

Take touring the universe to the next level with the 100i, and feel perfect harmony between pilot, machine, and environment. The patented AIR fuel system will keep you flying smoothly on long-distance treks, while the innovative interior will get you there in total comfort, and the sleek, unmistakably Origin design assures that you'll turn heads, wherever you're going.



# ELEGANT FIREPOWER



## **125a**

*When you're in the heat of battle, the last thing you should be worrying about is running out of fuel. In the 125a you'll never have to. With Origin's cutting-edge AIR system, a souped-up weapons package, and enhanced thrusters for increased speed, it's the obvious choice for the discerning maverick, looking to stay in the fight and outgun the competition.*

# EXTRAORDINARY CAPACITY

## 135c

*Want to get the party started, or keep it going? Need to get your gear to a gig halfway across the system? Or maybe you just need to make a timely delivery and a statement at the same time. In any case, the 135c can get the job done with style and sophistication. Sporting increased cargo capacity, Origin's AIR system, and an ultra-modern finish, the 135c effortlessly blends form and function.*

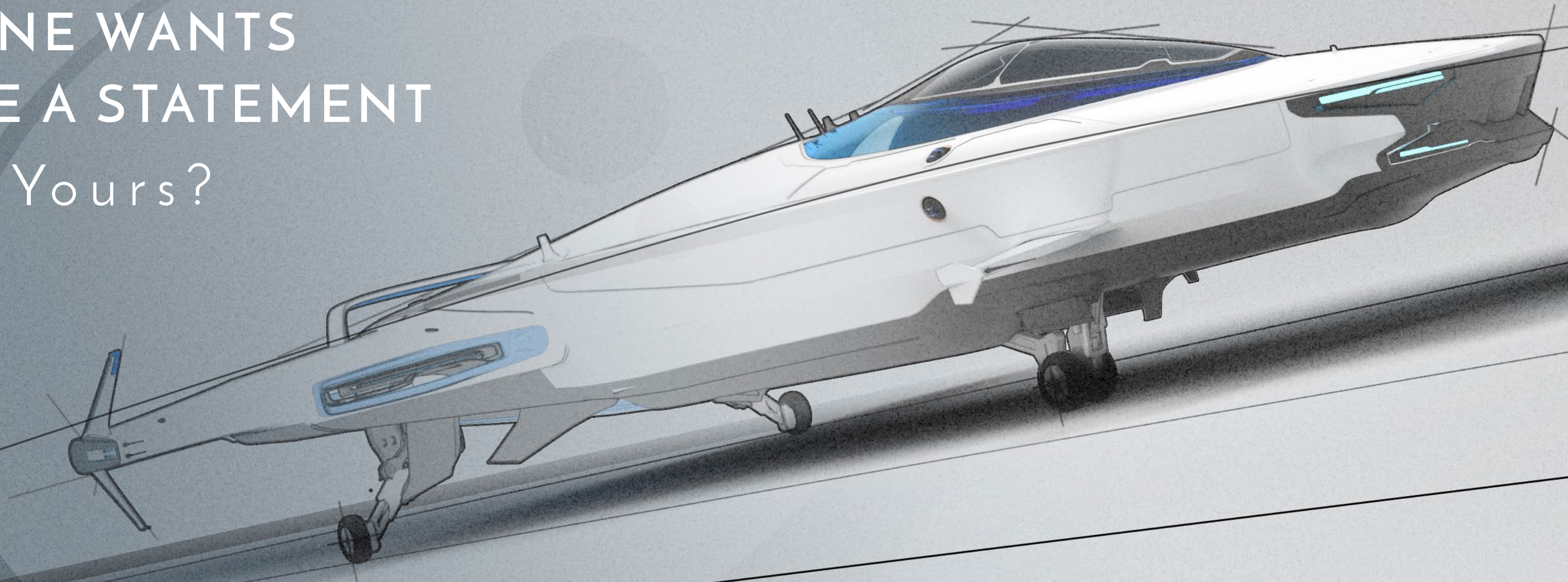


# COMFORT

Redefined



EVERYONE WANTS  
TO MAKE A STATEMENT  
What's Yours?



100i CONCEPT APPROVED BY

*Faisal Cant*

SENIOR DESIGNER  
FAISEL CANTI

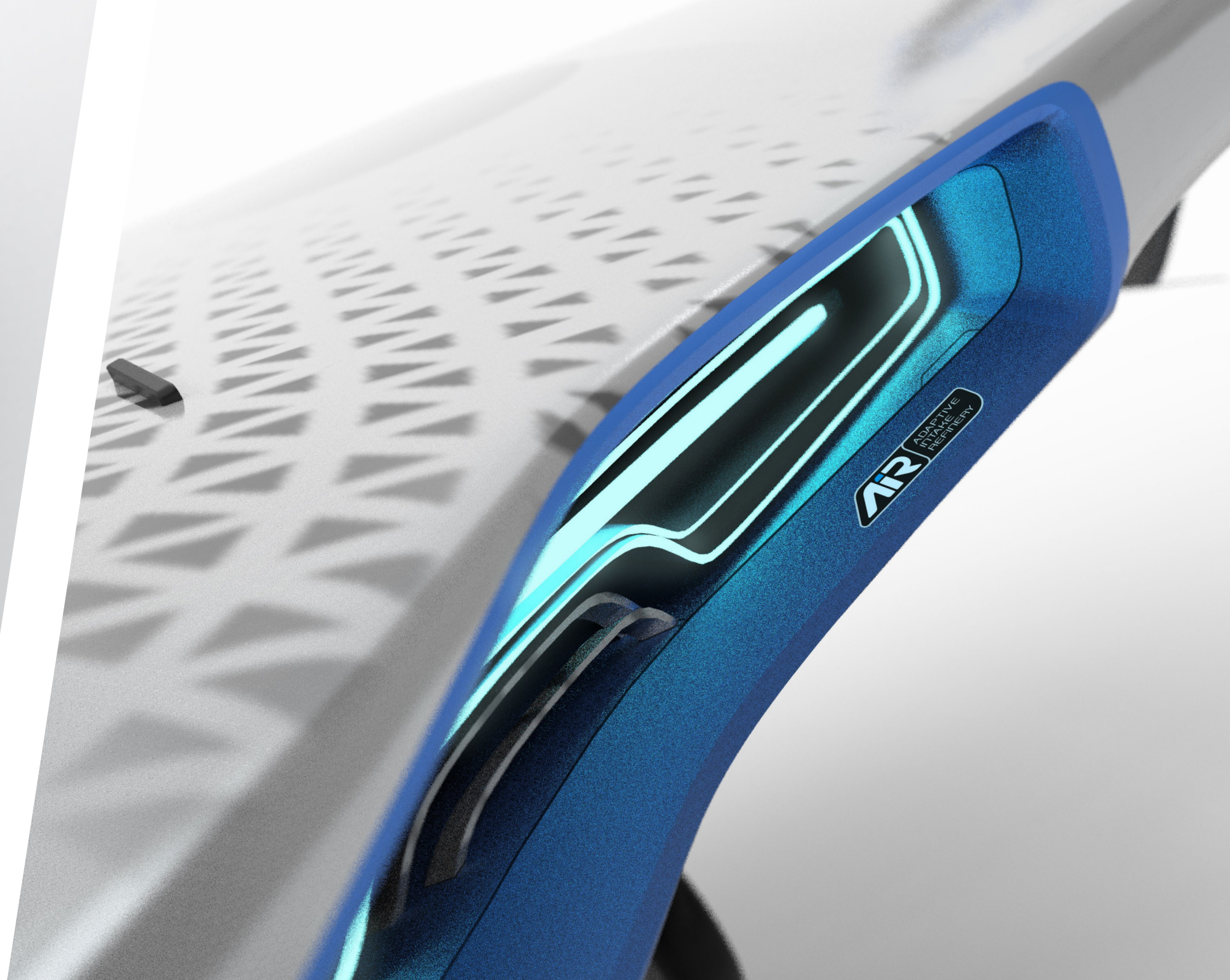


# TRAVEL ON AIR

*Each 100 series model comes equipped with our patented AIR (Adaptive Intake Refinery) fuel system. This cutting-edge technology allows the ship to extract an unprecedented variety of gases from space or atmosphere and convert the raw material into usable plasma, making the 100 series the most efficient and eco-friendly ships on the market.*



*Capable of long distance flights not usually attainable by vessels of this class, the 100 series lets you to tour the universe in unrivaled style, without worrying about unexpected stops to refuel.*



# STATS

LENGTH

15<sub>M</sub>

WIDTH

10<sub>M</sub>

HEIGHT

4<sub>M</sub>

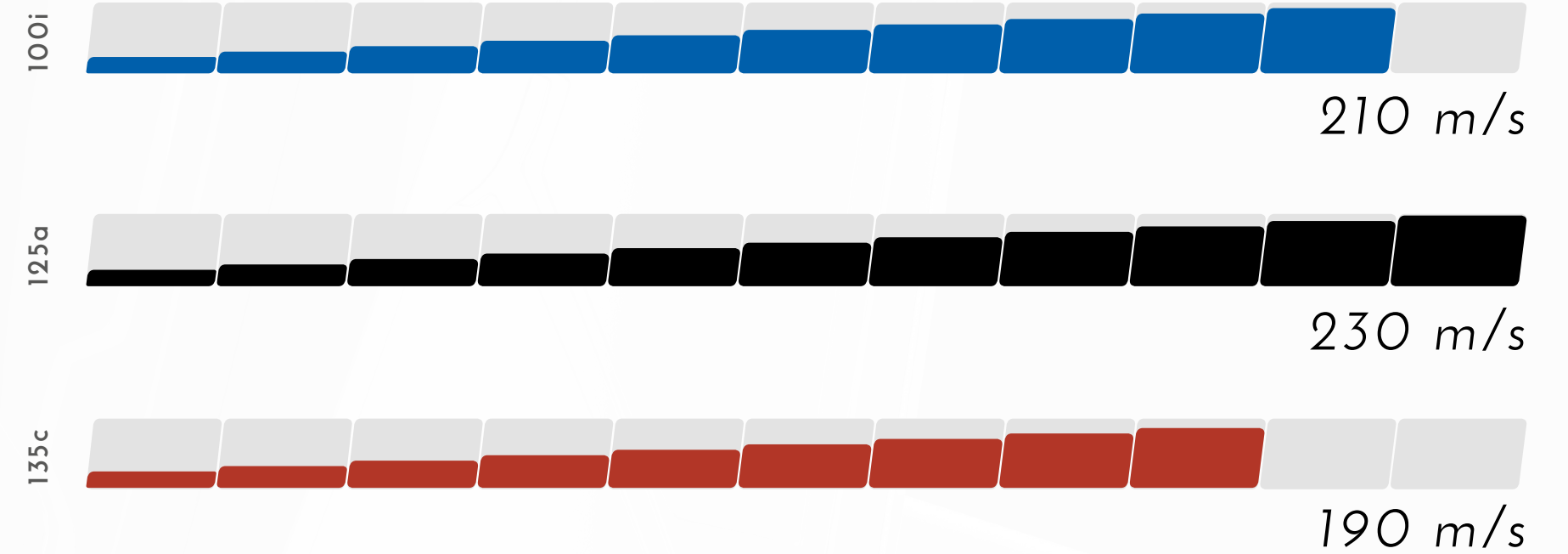
CARGO CAPACITY

2 SCU  
6 SCU (135c)

WEAPONRY

2x S1 Laser Cannons  
2x S1 Missiles (125a)

MAX SPEED





The models featured in this publication are approved for use in the UEE. Some items of equipment are available as extra-cost options only. Specifications correct at date of publish. For information on standard and optional equipment, please consult your local Origin Dealer. The vehicle depicted herein is undergoing concept and design as of the release of this publication. Specifications, features and appearance are subject to revision during development.